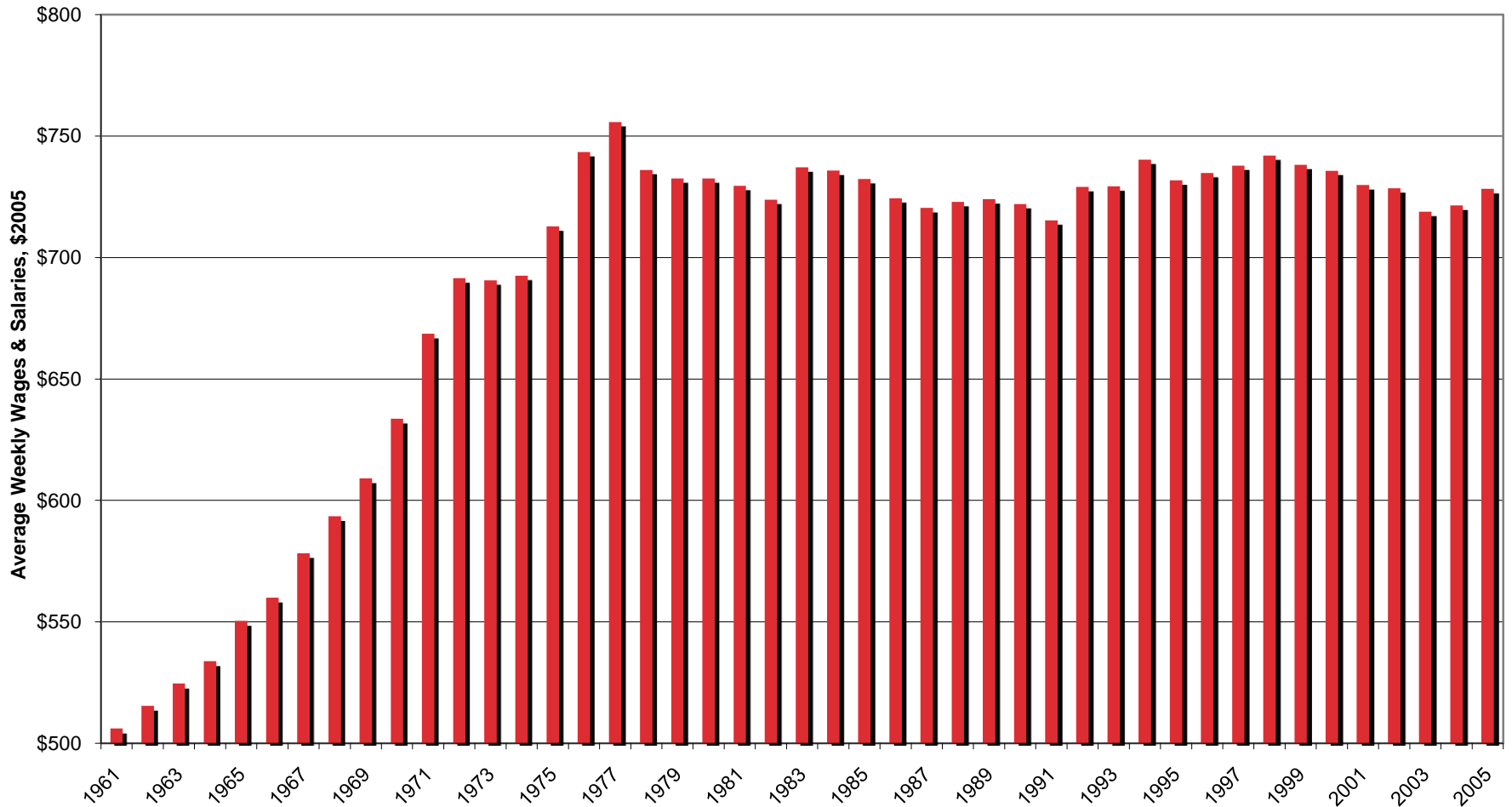
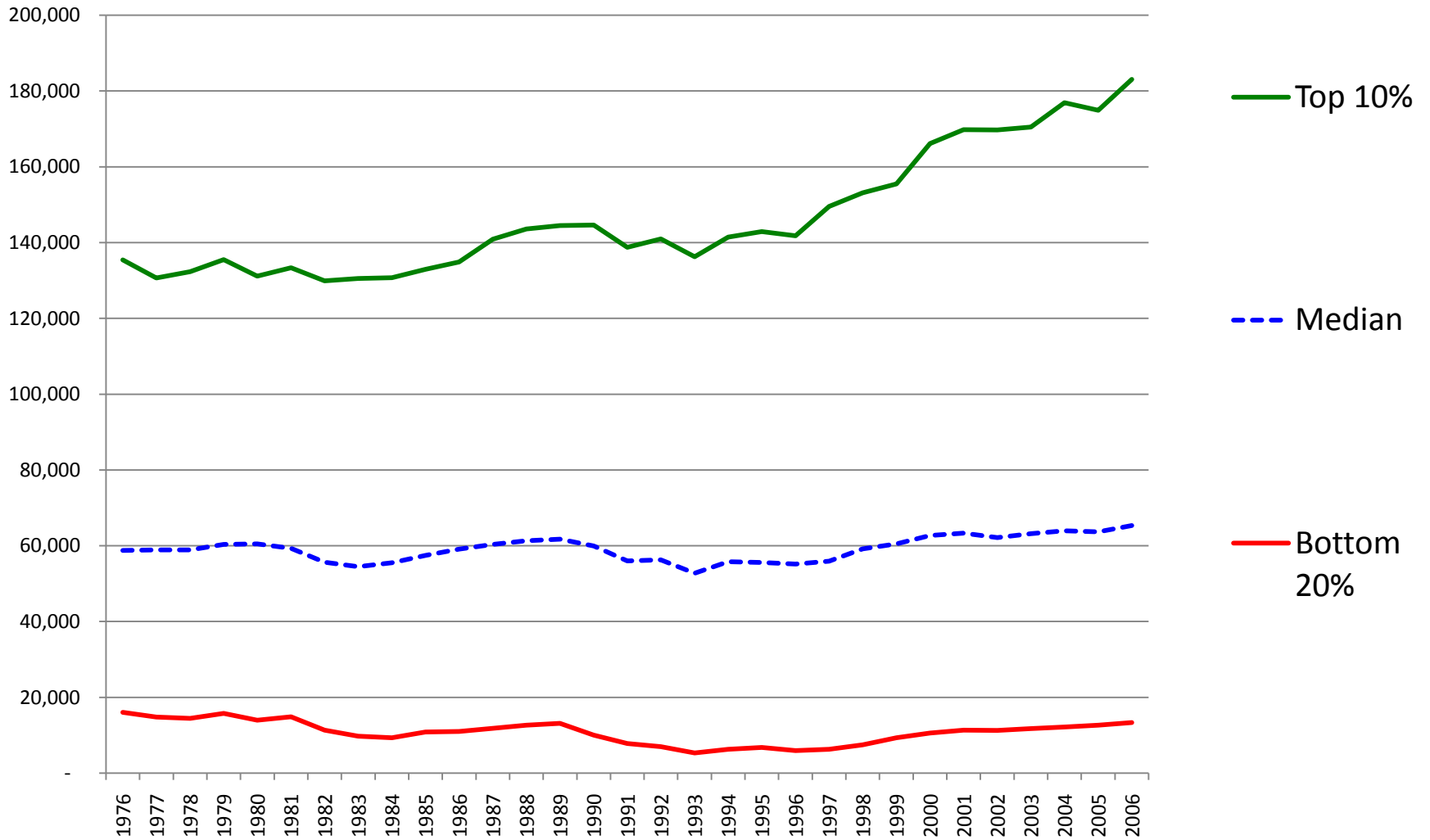


Average weekly wages and salaries, inflation adjusted, 1961 to 2005



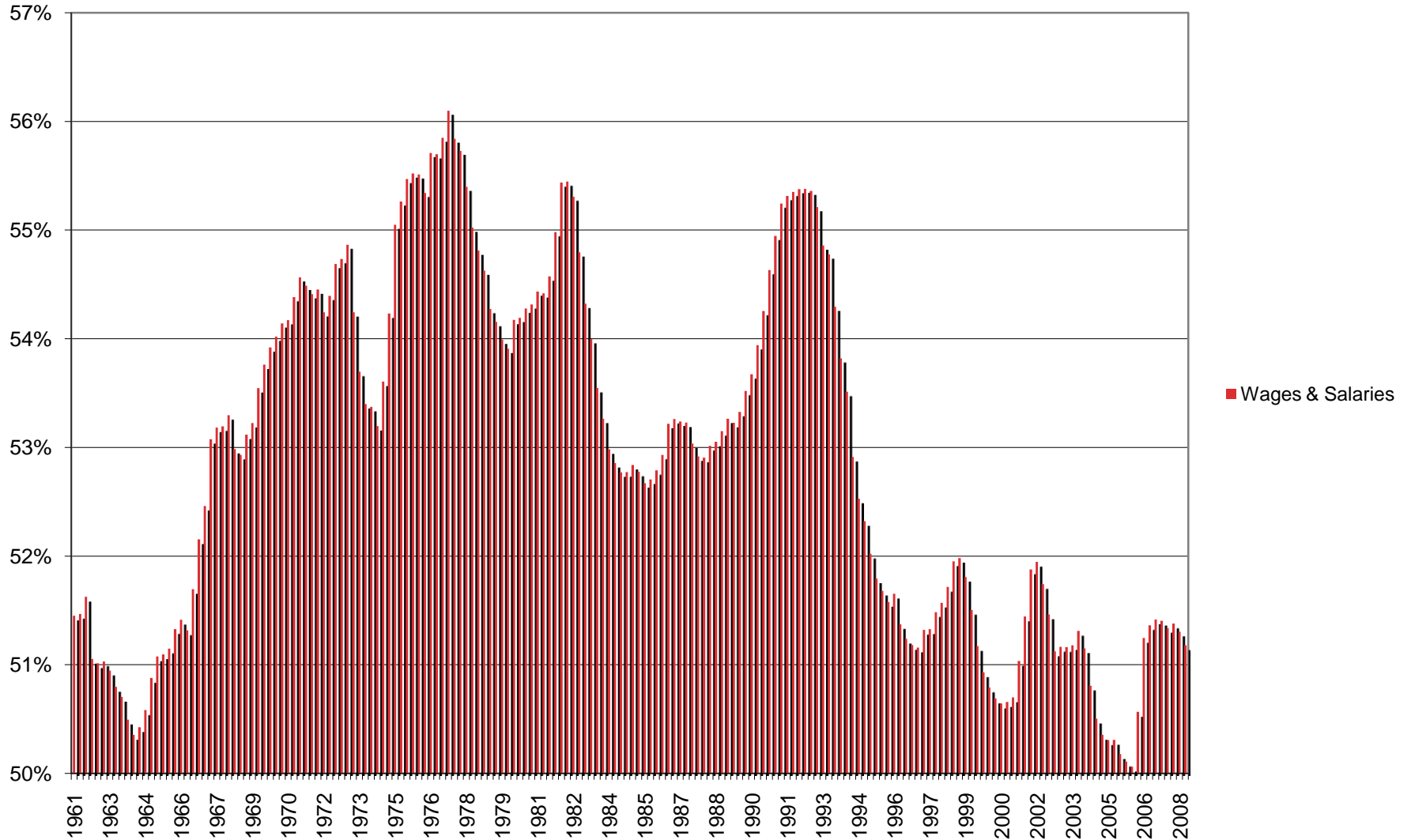
Sources: CPI CANSIM 326-0002; Wages and Salaries -- Composite of CANSIM 281-0021;281-0006 and 281-0027

Incomes of families with children 1976 to 2006 \$2006



Share of GDP represented by Wages & Salaries, 1961 to Q3 2008

Quarterly, 4-quarter moving average



Average of top 50 CEOs in Canada vs. Average Industrial Wage 1995 and 2007

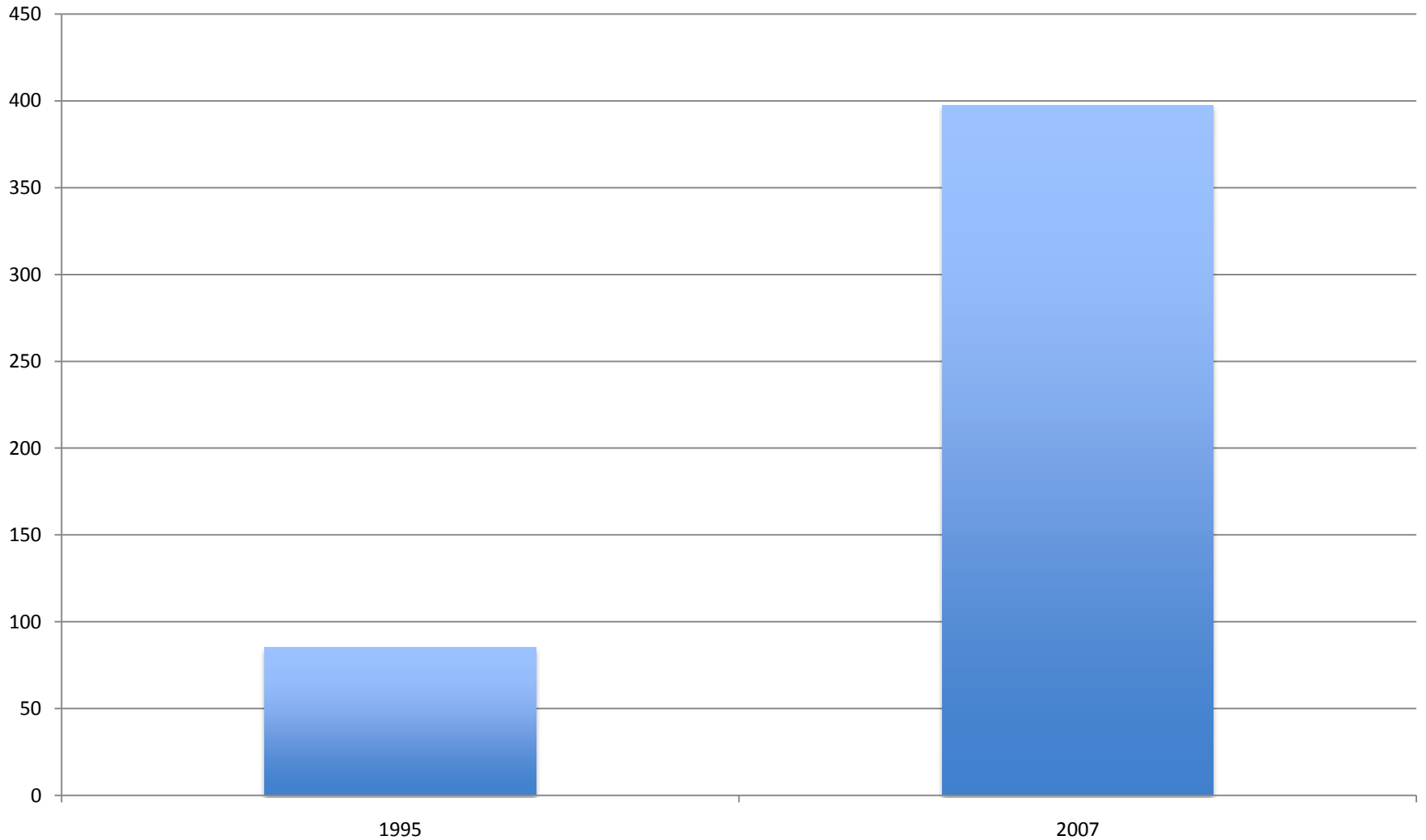


Chart 1

Total program spending, % of GDP, 1961 - 2005

